



TIM CAMPBELL 800-400-7500

THE STARSYS™ SYSTEM Product Selection Guide

MEDICATION CASSETTE



These cassettes can be used with the Starsys Unit Dose Medication Cart, Starsys Transfer Carts, and stationary and mobile units.

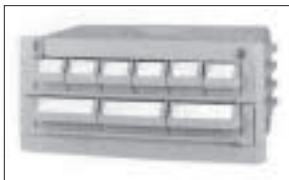
Features:

- Top mounted folding handle allows easy transport and smooth cassette exchange.
- *Cassettes are available with 2, 3, 4, and 5 levels and three bin widths.*
- Each cassette is key lockable for security.
- Lightweight polymer construction.
- Weight Capacity:
Cassette – 30 lbs. (13.6 kg)
Each Level – 9 lbs. (4 kg)

I. Select Desired Cassette Body

The medication cassettes are available in four level configurations. Determine the cassette requirements and select the desired cassettes from the four available models below.

Model No.	Description	Approx. Pkd. Wt.		Overall Dimensions		Inside Dimensions	
		(lbs.)	(kg)	Height/Depth/Width (in.)	(mm)	Height/Depth/Width (in.)	(mm)
SXCASS2	2 level cassette body	6	2.7	8 ¹⁵ / ₁₆ X11 ³ / ₄ X19 ³ / ₈	277x298x492	3 ³ / ₈ X11X16 ¹ / ₄	86x279x413
SXCASS3	3 level cassette body	9	4.1	11 ¹⁵ / ₁₆ X11 ³ / ₄ X19 ³ / ₈	303x298x492	3 ³ / ₈ X11X16 ¹ / ₄	86x279x413
SXCASS4	4 level cassette body	12	5.4	14 ¹⁵ / ₁₆ X11 ³ / ₄ X19 ³ / ₈	379x298x492	3 ³ / ₈ X11X16 ¹ / ₄	86x279x413
SXCASS5	5 level cassette body	15	6.8	17 ¹⁵ / ₁₆ X11 ³ / ₄ X19 ³ / ₈	456x298x492	3 ³ / ₈ X11X16 ¹ / ₄	86x279x413



SXCASS2



SXCASS3



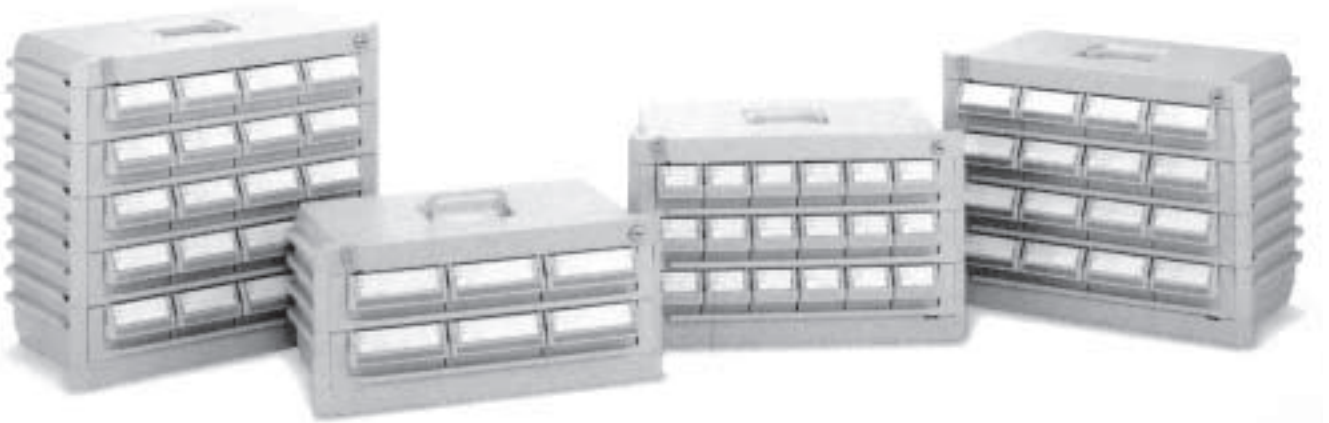
SXCASS4



SXCASS5



THE STARSYS™ SYSTEM



I. Select Desired Bin Sizes

The medication cassette bins are available in three sizes to fit into Medication cassettes. Select the required bins from the three available models below.

Model No.	Description	No. of Bins Per Level	Overall Dimensions Height/Depth/Width		Inside Dimensions Height/Depth/Width		Approx. Pkd. Wt.	
			(in.)	(mm)	(in.)	(mm)	(lbs.)	(kg)
SXBIN3	3" (76mm) wide cassette bin	6	2 ⁹ / ₁₆ x2 ¹¹ / ₁₆ x11 ¹⁵ / ₁₆	65x68x303	2 ⁷ / ₁₆ x2 ¹ / ₂ x10 ⁷ / ₈	62x64x276	.5	0.2
SXBIN4	4 1/2" (114mm) wide cassette bin	4	2 ⁹ / ₁₆ x4 ¹ / ₁₆ x11 ¹⁵ / ₁₆	65x103x303	2 ⁷ / ₁₆ x3 ¹⁵ / ₁₆ x10 ⁷ / ₈	62x100x276	1.35	0.6
SXBIN6	6" (152mm) wide cassette bin	3	5 ⁷ / ₁₆ x4 ¹ / ₁₆ x11 ¹⁵ / ₁₆	138x103x303	2 ⁷ / ₁₆ x5 ¹ / ₄ x10 ⁷ / ₈	62x133x276	1.80	0.8

Optional Bin Accessories

Model No.	Description
SXBINDIV	Cassette bin divider kit (20 dividers)
SXCASLAB	Cassette label kit (includes label strips in Mauve, Slate Blue, Taupe and Jade for identification of bins)



SXBIN3



SXBIN4



SXBIN6