



TIM CAMPBELL 800-400-7500

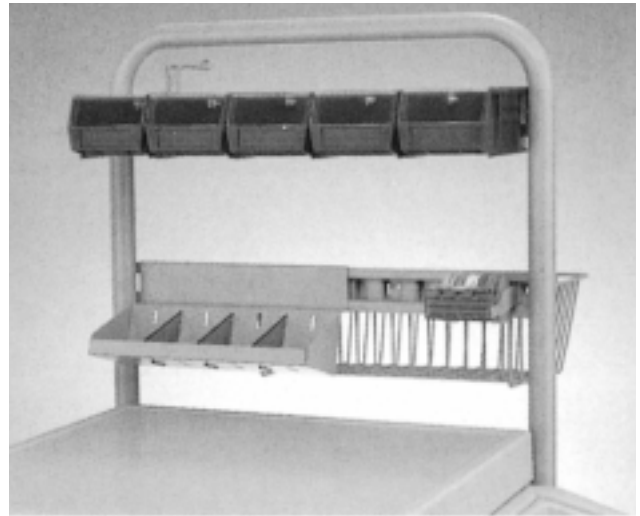
THE STARSYS™ SYSTEM Accessory Selection Guide

THE STARSYS™ SYSTEM Accessories

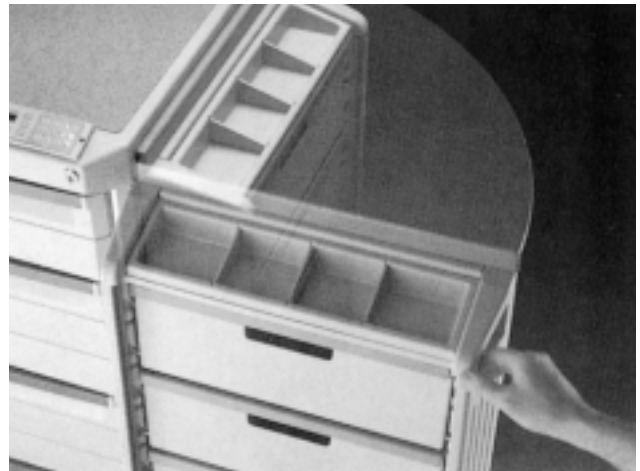
Starsys is a system of polymer components that can be configured as tall or short units, mobile or stationary and in single, double or triple widths.

- **The System:** The Starsys system allows you to configure a variety of mobile and stationary units, with drawers and shelves, that can be reconfigured without tools as applications change.
- **Flexibility:** Starsys offers a complete line of overbridge, side storage, and wall mounted overhead storage accessories that enable you to customize to any specific need.
- **Overbridge Accessories:** The overbridge attaches to the back of a single wide Starsys unit and holds a variety of accessories from hooks for general purposes, to label dispensers for more specific uses as well as bins and shelves for storage.
- **Side Storage Units and Accessories:** Side storage units are available in swing-out and stationary versions. They are designed to increase storage capacity and to accommodate a variety of accessories. The swing-out side storage unit provides the user front access to all supplies, increases the workforce by 135%, and allows multiple-person access comfortably around the unit. Swing-out side units provide more storage and retracts to provide a smaller footprint when not in use.
- **Overhead Storage Units:** Overhead storage units are wall mounted and utilize a lockable tambour door for security. The overhead storage units can be filled with shelves, cassette bins* or storage bins.*

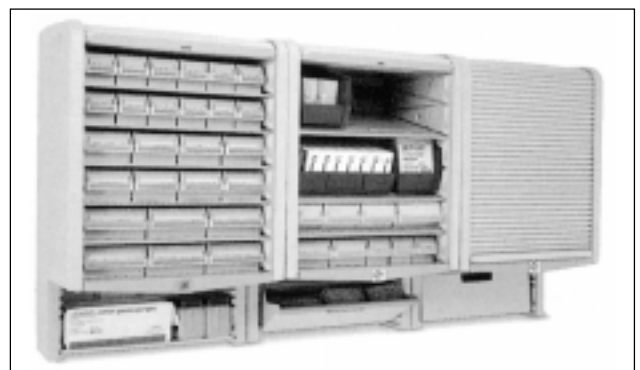
**Refer to the Cassette and Bin Storage Selection Guide for more information.*



Overbridge



Side Storage Unit



Overhead Storage Unit



Side Storage Units

| Model No. | Description |
|-----------|---|
| SXPOD | Stationary Side Storage Assembly without Door (30" H. x 19 1/2" W. x 6" D.) (762 x 495 x 152mm) |
| SXPODR | Stationary Side Storage Assembly with Door (30" H. x 19 1/2" W. x 6" D.) (762 x 495 x 152mm) |
| SXPODSL | L.H. Swing-out Side Storage Assembly without Door (30 3/8" H. x 19 3/4" W. x 6 1/4" D.) (772 x 502 x 159mm) |
| SXPODSL D | L.H. Swing-out Side Storage Assembly with Door (30 3/8" H. x 19 3/4" W. x 6 1/4" D.) (772 x 502 x 159mm) |
| SXPODSR | R.H. Swing-out Side Storage Assembly without Door (30 3/8" H. x 19 3/4" W. x 6 1/4" D.) (772 x 502 x 159mm) |
| SXPODSR D | R.H. Swing-out Side Storage Assembly with Door (30 3/8" H. x 19 3/4" W. x 6 1/4" D.) (772 x 502 x 159mm) |

L.H.=Left Hand; R.H.=Right Hand

Side Storage Units cannot be retrofitted to carts in the field.

Side Storage Unit Accessories

| Model No. | Description |
|-----------|---|
| SXPODTRY | Side Storage Unit Tray & Divider Assembly (2 1/4" H. x 16 7/8" W. x 4 3/8" D.) (57 x 429 x 111mm) |
| SXFULSHLF | Side Storage Unit Shelf – Full Width (4 3/16" [106mm] D. x 16 7/8" [429mm] L.) |
| SXCHRT | Chart Holder |
| SXTNK* | Gas Tank Cylinder Holder (for Stationary Side Units only) (25 1/8" H. x 12 5/8" W. x 5 1/4" D.) (638 x 321 x 133mm) |
| SXSHRPS** | Sharps Container Holder |
| SXCUP | Cup Holder (Holds 1 3/8" [35mm], 2" [51mm], 2 1/2" [64mm] diameter cups) |
| SXBSKT-H | Waste Basket and Holder |
| SXBSKT | Waste Basket |
| SXTLTBIN | Tilt-out/Removable Bin (3 3/4" D. x 16 1/8" L. x 6" H.) (95 x 410 x 159mm) |



SXTNK
*Tanks not included. Tank holders must be used in stationary side units only.



SXSHRPS
** Sharps container not included.



SXPODR



SXPODSL D



SXCUP
(shown inside SXTLTBIN)



SXBSKT-H



SXPODTRY

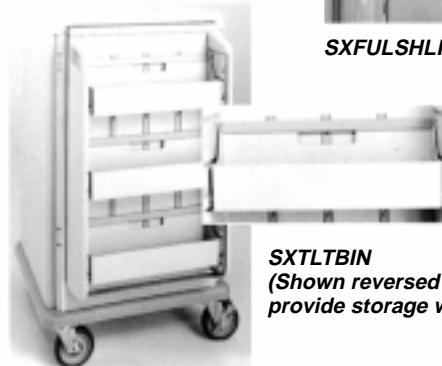


SXFULSHLF



SXTLTBIN – Tilt Bin

(When using a Tambour door, units will accommodate only 3 tilt-out bins)



SXTLTBIN
(Shown reversed to provide storage with a lip)

Drawer Accessories

| Model No. | Description |
|------------|--|
| SX3DIV | 3" (76mm) Drawer Divider Kit [(2) 16.8" (427mm)L. & (6) 5" (127mm)L.] |
| SX3SDIV | 3 pk. Short Divider for SX3DIV |
| SX3LDIV | 2 pk. Long Divider for SX3DIV |
| SX6DIV | 6" (152/229mm) Drawer Divider Kit [(2) 16.8" (427mm) L. & (6) 5" (127mm) L.] |
| SX6SDIV | 3 pk. Short Divider for SX6DIV |
| SX6LDIV | 2 pk. Long Divider for SX6DIV |
| SX3TOTE | Exchange Tote for 3" Drawer |
| SX6TOTE | Exchange Tote for 6" Drawer |
| SX9TOTE | Exchange Tote for 9" Drawer |
| SX3-LKTOTE | Exchange Tote with Locking Cover for 3" Drawer |
| SX6-LKTOTE | Exchange Tote with Locking Cover for 6" Drawer |
| SX9-LKTOTE | Exchange Tote with Locking Cover for 9" Drawer |
| SXLABKIT | Drawer & Door Label Kits (10 pk.) |

Maximum weight capacity of totes: 3" (76mm) = 25 lbs. (11.4kg), 6" (150mm) & 9" (230mm) = 40 lbs. (18kg)



SX3-LKTOTE



SX6TOTE



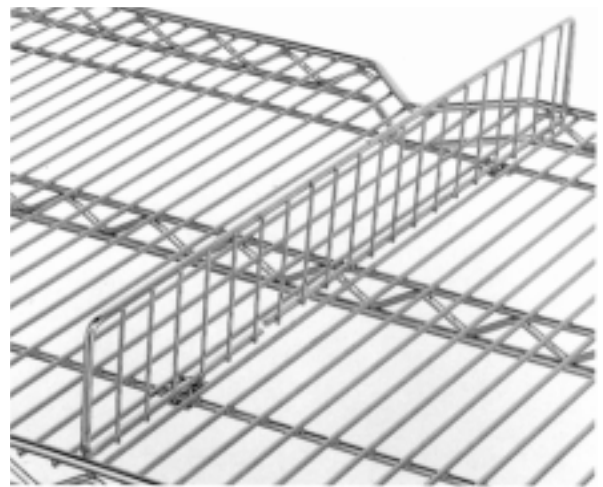
SXLABKIT

Wire Shelf Accessories

| Model No. | Description |
|-----------|--|
| SXSLDG | Ledge, Chrome (15 ¹ / ₄ " L. x 3 ³ / ₄ " W. x 4 ¹ / ₈ " H.) (387 x 19 x 105mm) |
| SXSLFDIV | Divider, Chrome (21" L. x 5 ⁵ / ₈ " W. x 3" H.) (533 x 16 x 76mm) |
| 9990P7 | Label Holder (16 ¹ / ₂ " L. x 1 ¹ / ₂ " H.) (419 x 38mm) |
| 9990P8 | Label Holder (36 ³ / ₈ " L. x 1 ¹ / ₂ " H.) (924 x 38mm) |



SXSLDG



SXSLFDIV

THE STARSYS™ SYSTEM

Overbridge & Accessories

| Model No. | Description |
|-----------|--|
| SXS0B | Single Wide Overbridge Assembly with two hanger rails (weight capacity: 40 lbs. [18kg]) |
| SXOBSRAIL | Extra Hanger Rail (2 ³ / ₁₆ " [55mm] H. x 1" [25.4mm] D. x 19 ¹ / ₂ " [495mm] L. usable space) |
| SX515 | Overbridge with top shelf and hanger rail (Weight capacity: 40 lbs. [18kg]) |
| SX520 | Overbridge with 2 shelves (Weight capacity: 40 lbs. [18kg]) |
| SX560 | Overbridge shelf (Weight capacity: 40 lbs. [18kg]) (2 ³ / ₄ " H. x 14 ¹ / ₈ " D. x 22 ³ / ₄ " L.) (70 x 359 x 578mm) |
| SX566 | Utility Pole with Universal Clamp (Attaches to Overbridge) |
| SX570 | Universal Clamp |
| SX571 | Short Utility Hook (3 ¹ / ₂ " [89mm] usable length) |
| SX575 | Laryngoscope Blade/Specimen Holder |
| SX581 | Half-Size Metal Utility Bin (5 ³ / ₄ " [146mm] L. x 5 ¹ / ₂ " [140mm] H. x 5 ¹ / ₂ " [140mm] D.) |
| SX582 | Full-Size Metal Utility Bin (11 ⁵ / ₈ " [292mm] L. x 5 ¹ / ₂ " [140mm] H. x 5 ¹ / ₂ " [140mm] D.) |
| SX583 | Label/Tape Dispenser |
| SX585 | Wire Supply Basket (17" [432mm] L. x 5" [127mm] D. x 7" [178mm] W.) |
| SX586 | Utility Bin with Cover (Package of 6) |



SXS0B
(Shown with optional accessories)



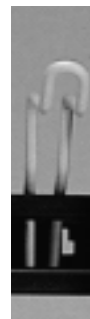
SX515



SX560



SX570



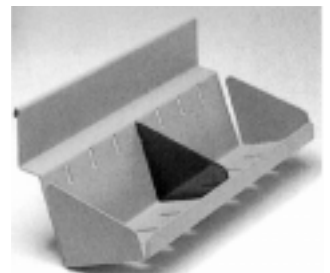
SX571



SX575



SX581



SX582



SX583



SX585



SX586

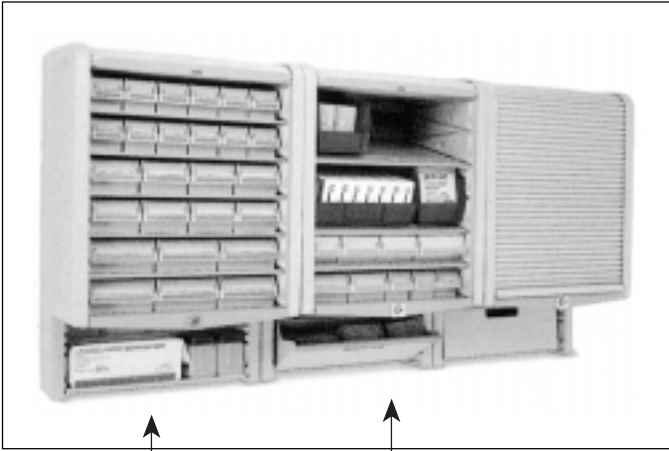


THE STARSYS™ SYSTEM

Overhead Storage & Accessories

| Model No. | Description |
|-----------|--|
| SXOH* | Overhead Cabinet Assembly (30" H. x 14" D. x 19 1/2" L.) (762 x 356 x 495mm) |
| SXOHSHF | Overhead Cabinet Shelf Assembly (12 1/4" [311mm] D. x 16 7/8" [429mm] L.; 20 lb. [9.1kg] Load Capacity) |
| SXFULSHLF | Side Storage Unit Shelf — Full Width (4 3/16" [106mm] D. x 16 7/8" [429mm] L.) 5 lb. [2.3kg] Load Capacity |
| SXTLTBIN | Tilt-Out/Removable Bin (6" H. x 3 3/4" D. x 16 1/8" L.) (152 x 95 x 410mm) |
| SXBIN3 | 3" Wide Cassette Bin (2 9/16" H. x 11 15/16" D. x 2 11/16" L.) (65 x 303 x 68mm) |
| SXBIN4 | 4 1/2" Wide Cassette Bin (2 9/16" H. x 11 15/16" D. x 4 1/16" L.) (65 x 303 x 103mm) |
| SXBIN6 | 6" Wide Cassette Bin (2 9/16" H. x 11 15/16" D. x 5 1/2" L.) (65 x 303 x 140mm) |
| MB30230B | Supply Bin (10 7/8" x 5 1/2" x 5") (276 x 140 x 127mm) (sold in multiples of 12 only) |
| MB30235B | Supply Bin (10 7/8" x 11" x 5") (276 x 279 x 127mm) (sold in multiples of 6 only) |

*Locking Tambour door is supplied with SXOH.



**SXOH, with
5-SXOHSHF,
Cassette Bins,
and SXFULSHLF**

**SXOH, with
3-SXOHSHF, Supply
Bins, Cassette Bins
and Tiltout Bin**

Miscellaneous Accessories



SXSTP-B

| Model No. | Description |
|-----------|------------------|
| SXSTP-B | Basic Touch Pad* |

*Touch pads are shipped with a complete set of instructions. **Must be ordered with a locking single wide short unit.**

- **Three user-programmable PIN numbers**
- **Programmable automatic relock function**
- **Programmable access-denied function**



SXEHAN

| Model No. | Description |
|-----------|--|
| SXEHAN | Extended Handle Assembly (4" [102mm] H. x 4 1/4" [108mm] D. x 21 1/2" [546mm] L.) |



| Model No. | Description |
|-----------|--|
| SXIV | IV Pole (Attaches to cart) Must specify preferred installation location on cart. |

SXIV



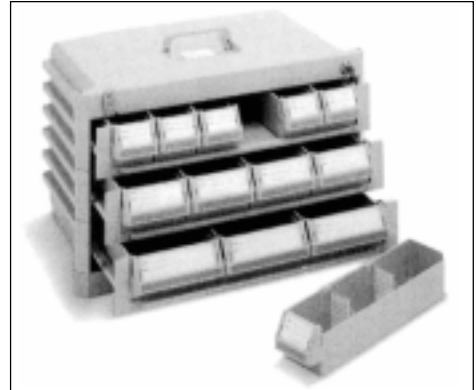
THE STARSYS™ SYSTEM

Medication Cassette

These cassettes can be used with the Starsys Unit Dose Medication Cart, Starsys Transfer Carts, and stationary, mobile and workcenter units.

Features:

- Top mounted folding handle allows easy transport and smooth cassette exchange.
- Cassettes are available with 2, 3, 4, and 5 levels and three bin widths.
- Each cassette is key lockable for security.
- Lightweight polymer construction.



| Model No. | Description | Approx. Pkd. Wt. | | Overall Dimensions | | Inside Dimensions | |
|-----------|-----------------------|------------------|------|--|-------------|--|------------|
| | | (lbs.) | (kg) | Height/Depth/Width (in.) | (mm) | Height/Depth/Width/Level (in.) | (mm) |
| SXCASS2 | 2 level cassette body | 6 | 2.7 | 8 ⁷ / ₈ x11 ³ / ₄ x19 ³ / ₈ | 225x298x492 | 3 ³ / ₈ x11x16 ¹ / ₄ | 86x279x413 |
| SXCASS3 | 3 level cassette body | 9 | 4.1 | 11 ⁷ / ₈ x11 ³ / ₄ x19 ³ / ₈ | 302x298x492 | 3 ³ / ₈ x11x16 ¹ / ₄ | 86x279x413 |
| SXCASS4 | 4 level cassette body | 12 | 5.4 | 14 ⁷ / ₈ x11 ³ / ₄ x19 ³ / ₈ | 378x298x492 | 3 ³ / ₈ x11x16 ¹ / ₄ | 86x279x413 |
| SXCASS5 | 5 level cassette body | 15 | 6.8 | 17 ⁷ / ₈ x11 ³ / ₄ x19 ³ / ₈ | 454x298x492 | 3 ³ / ₈ x11x16 ¹ / ₄ | 86x279x413 |

| Model No. | Description | No. of Bins Per Level | Overall Dimensions | | Inside Dimensions | | Approx. Pkd. Wt. | |
|-----------|----------------------------------|-----------------------|--|------------|---|------------|------------------|------|
| | | | Height/Depth/Width (in.) | (mm) | Height/Depth/Width (in.) | (mm) | (lbs.) | (kg) |
| SXBIN3 | 3" (76mm) wide cassette bin | 6 | 2 ⁵ / ₈ x11 ⁷ / ₈ x2 ¹¹ / ₁₆ | 66x302x68 | 2 ⁷ / ₁₆ x10 ³ / ₄ x2 ⁷ / ₁₆ | 62x273x62 | .5 | 0.2 |
| SXBIN4 | 4 1/2" (114mm) wide cassette bin | 4 | 2 ⁵ / ₈ x11 ⁷ / ₈ x4 ¹ / ₃₂ | 66x302x102 | 2 ⁷ / ₁₆ x10 ³ / ₄ x3 ¹³ / ₁₆ | 62x273x97 | 1.35 | 0.6 |
| SXBIN6 | 6" (152mm) wide cassette bin | 3 | 5 ⁵ / ₈ x11 ⁷ / ₈ x5 ³ / ₈ | 66x302x143 | 2 ⁷ / ₁₆ x10 ³ / ₄ x5 ¹ / ₈ | 62x273x130 | 1.80 | 0.8 |

Optional Bin Accessories

| Model No. | Description |
|-------------|--|
| SXBINDIV | Cassette bin divider kit (20 divides, up to 4 bins) |
| SXCASLAB | Cassette label kit (includes label strips in Mauve, Slate Blue, and Jade for identification of bins) |
| SXBINLAB-BL | Cassette Bin Labels (5 sheets of Slate Blue Bin Labels – 18 of each size per sheet) |
| SXBINLAB-GR | Cassette Bin Labels (5 sheets of Jade Bin Labels – 18 of each size per sheet) |
| SXBINLAB-RD | Cassette Bin Labels (5 sheets of Mauve Bin Labels – 18 of each size per sheet) |



SXBIN3



SXBIN6