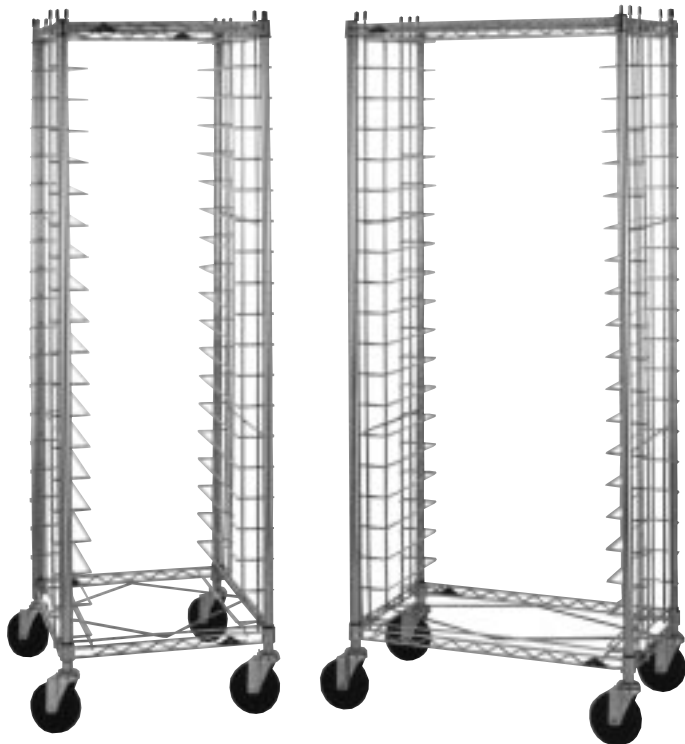




Item# _____

Job _____



METRO MOBILE END- AND SIDE-LOAD WIRE BUN PAN RACKS

- **Cost Effective:** Metro's Bun Pan Racks offer an economical solution for sturdy, dependable storage and transport of bun pans.
- **Two Styles Available:** End-load models allow for optimum floor space utilization, while side-load models offer a larger tray landing area. Both styles can be loaded on one side and unloaded from the other for maximum efficiency and convenience.
- **Choice of Slide Spacing:** Each style is available with a choice of slide spacings — 1½" (38mm), which has a 38 pan capacity, and 3" (76mm), which has a 20 pan capacity.
- **UPS Shippable** in one box for lower freight costs.
- **Quick, Secure Assembly:** Units assemble quick and easy without special tools.
- **Lightweight, Maneuverable:** 5" (127mm) swivel casters promote ease of mobility.
- **Super Erecta Brite™ Finish**

Job _____

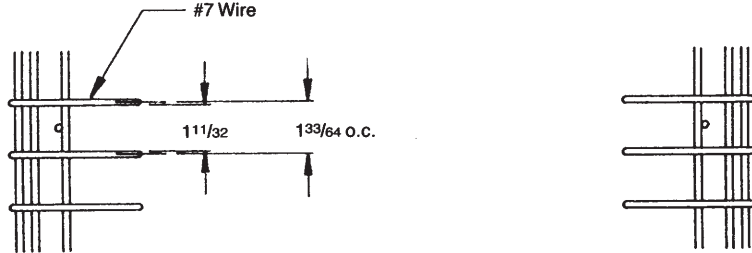


METRO MOBILE END- AND SIDE-LOAD WIRE BUN PAN RACKS

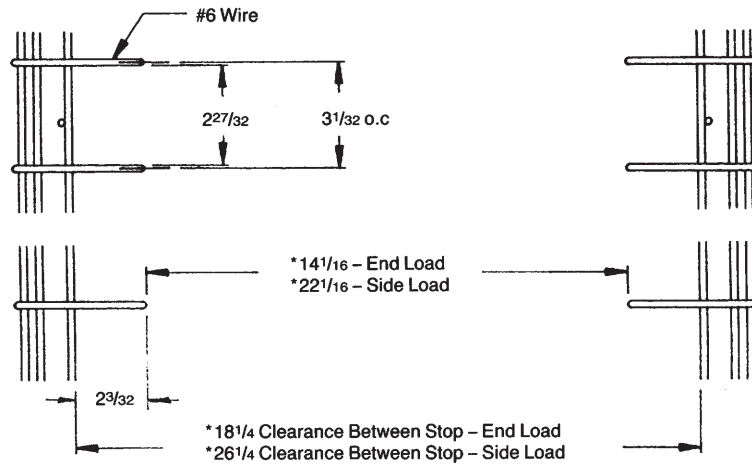
SPECIFICATIONS:

- **Slides, Frame, Posts:** Super Erecta Brite™ finish with Metrolac protective coating.
- **Casters:** 5" (127mm) stem/swivel casters with resilient tread.

RE1/RS1 Slide Spacing



RE3/RS3 Slide Spacing



*Dimensions are for an unloaded cart.
Cart designed for bottom loading 18" x 26" bun pans.
200 lb. unit wt. capacity with up to 30 lb. on any one level.

DIMENSIONS:

Model No.	Description	Height		Width		Length		Slide Spacing		Pan Capacity		Approx. Pkd. Wt.	
		(in.)	(mm)	(in.)	(mm)	(in.)	(mm)	(in.)	(mm)	No.	Size (in.)	(lbs.)	(kg)
RE1	End-Load	69	1750	$21\frac{3}{4}$	550	27	685	$1\frac{1}{2}$	40	38	18x26	61	28
RE3	End-Load	69	1750	$21\frac{3}{4}$	550	27	685	3	75	20	18x26	70	32
RS1	Side-Load	69	1750	$19\frac{1}{2}$	490	30	760	$1\frac{1}{2}$	40	38	18x26	61	28
RS3	Side-Load	69	1750	$19\frac{1}{2}$	490	30	760	3	75	20	18x26	70	32

ACCESSORIES:

Model No.	Description
9992DB	$3\frac{1}{2}$ " (90mm) Diameter Rubber Donut Bumper
9992N	$5\frac{1}{2}$ " (140mm) Diameter Rubber Donut Bumper